



2100 Series Two Pole Voltage Testers

2100-Alpha | 2100-Beta | 2100-Gamma

The Beha-Amprobe 2100-Alpha, 2100-Beta and 2100-Gamma are rugged and reliable two pole voltage testers for voltage and continuity checks. Built tough for use in industrial and commercial environments, the 2100 Series is safety rated up to CAT III 1000 V / CAT IV 600 V and measures voltage range up to 1000 V AC and 1200 V DC (2100-Gamma only). Designed with reinforced components for dependable performance, the 2100 Series has an ingress protection degree of IP 64 and is built according to voltage tester standard EN 61243-3:2014 and is GS approved.



2100-Alpha
DUAL RATED
CAT III 690V CAT IV 600V

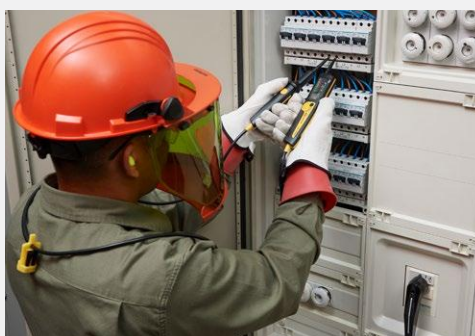
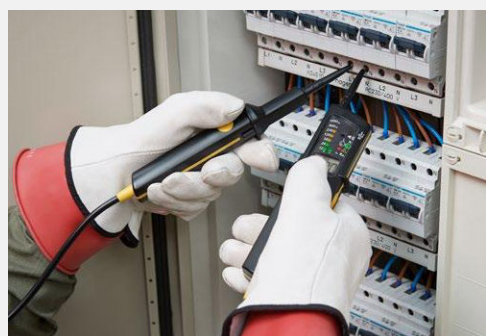
2100-Beta
DUAL RATED
CAT III 690V CAT IV 600V



2100 Series Features

- **Colored LED display** to make different voltage levels more visible
- **Automatic AC/DC voltage detection** with polarity indication
- **Voltage test** up to 1000 V AC / 1200 V DC (2100-Gamma)
- **Switchable load** and 10 mA or 30 mA RCD trip test with two push buttons
- **Automatic continuity test** with visual (LED)
- **Low resistance indication** to check wiring in contactor and relay application without influence of the coils (2100-Gamma)
- **Single pole test** to check phase polarity
- **Two pole phase rotation indication** with indicator for right and left rotation
- **Robust, double insulated cable** with wear indication shows when the test leads are excessively worn or damaged and need replacement
- **Backlight** (2100-Beta/2100-Gamma)
- **Torch light / measurement area illumination** for working in poorly lit areas
- **Audible indication** when detected voltages above 50 V AC and 120 V DC
- **Auto power ON/OFF** and ON/OFF button
- **Non contact cable break detector / EF** (electric field)
- **Resistance measurement** - to 1999 ohms (2100-Gamma)
- **Data Hold** (2100-Beta/2100-Gamma)
- **IP 64 splash and dust proof**
- **GS approved**, built according to IEC 61243-3:2014, EN 61243-3:2014, DIN VDE 0682-401:2015
- **Safety rated CAT IV 600 V / CAT III 690** (CAT III 1000 V 2100-Gamma)





Two Button Switchable Load/RCD Trip Test

When the two buttons are not pressed the unit is in high impedance mode, providing additional safety protection when testing live power sources, and avoiding accidental tripping of residual-current devices (RCD). When the buttons are pressed the unit is in low impedance mode, eliminating inaccurate readings as result of ghost voltage. Additionally, in systems with RCDs you can press the buttons to intentionally trip 10 mA or 30 mA RCDs and determine if they are wired correctly.

Long, durable test leads with wear indicator

Extra-long 1.5 m test leads make testing fast and convenient. The two pole tester's rugged, durable test leads have two layers of insulation for added durability and safety. If the inner, contrasting-colored layer is showing, that's a sign that the test leads require replacement.

Test probe protector cover with accessory storage

Store the 4 mm test probe extensions and GS38 protective probe caps, ensuring you always have them when needed. The test probe protector cover tip also helps to open UK electrical safety outlets.



Quick Guide

Features:	2100-Alpha	2100-Beta	2100-Gamma
Safety Rating (measurement category)	CAT III 690 / CAT IV 600	CAT III 690 / CAT IV 600	CAT III 1000 / CAT IV 600
Voltage Test	•	•	•
Voltage Indication - LCD		6 - 690 V AC/DC	6 - 1000 V AC, 6 - 1200 V DC
Voltage Indication - LED	12 - 690 V AC/DC	12 - 690 V AC/DC	12 - ≥690 V AC/DC
Continuity Test (visual and audible indication)	< 500 kΩ	< 500 kΩ	< 500 kΩ
RCD Trip Test (10 mA or 30 mA)	•	•	•
Single Pole Phase Test	•	•	•
Full Range Polarity Detection	•	•	•
Two Pole Phase Rotation Indication	Right/Left	Right/Left	Right/Left
IP 64 Splash and Dust Proof	•	•	•
Backlight		•	•
Torch Light/Measurement Area Illumination	•	•	•
Double Insulated Cable with Wear Indication	•	•	•
4 mm Test Probe Extensions (screwable) and protective probe caps GS38	•	•	•
Data Hold Function		•	•
Resistance Measurement			0...1999 Ω
Low Resistance Indication			Sound < 10 Ω
Non contact cable break detector / EF (electric field)			•

	2100-Alpha	2100-Beta	2100-Gamma
Voltage Test			
LED voltage range	12... 690 V AC/DC	12... 690 V AC/DC	12... ≥690 V AC/DC
LED indicator	±12, ±24, 50, 120, 230, 400, 690 V		±12, 24, 50, 120, 230, 400, ≥690 V
LED tolerances	acc. to EN 61243-3:2014		
LCD voltage range	–	6... 690 V AC/DC	6...1000 V AC / 6...1200 V DC
LCD resolution	–	1 V	
LCD tolerance	–	± (3% rdg + 3 LSD)	
Frequency range	DC, 16 2/3 Hz...1000 Hz		
LED and LCD response time	<1s		
Acoustic indication	≥50 V AC, ≥120 V DC		
Voltage detection	Automatic (AC/DC)		
Polarity detection	Full range		
Range detection	Automatic		
Current I (load buttons not activated)	≤3.5 mA AC/DC at 690 V AC/DC		≤3.5 mA AC at 1000 VAC / ≤4.5 mA DC at 1200 VDC
Internal load (load buttons not activated)	Approximately 2.4 W at 690 V AC/DC		Approximately 3.5 W at 1000 VAC / Approximately 5.4 W at 1200 VDC
Test current switchable load (load buttons activated)	≤250 mA AC/DC at 690 V AC/DC		≤350 mA AC at 1000 VAC / ≤420 mA DC at 1200 VDC
Switchable load (load buttons activated)	Approximately 170 W at 690 V AC/DC		Approximately 350 W at 1000 VAC / Approximately 500 W at 1200 VDC
Automatic power ON	LED: >10 V	LED: >10 V LCD: >10 V	LED: >10 V LCD: > 10 V
Impedance at ELV level	270 kΩ @ 50 VAC	270 kΩ @ 50 VAC	320 kΩ @ 50 VAC
Impedance at ELV level and switched load	5 kΩ @ 50 VAC	5 kΩ @ 50 VAC	5 kΩ @ 50 VAC
Trip Test of RCD (earth leakage circuit breaker)			
Test current switchable load (load buttons activated)	>30 mA AC at 230 VAC		
Single Pole Phase Test			
Voltage range	100...690 VAC against earth		100...1000 VAC against earth
Frequency range	40 Hz...70 Hz		
Acoustic indication	yes		
Indication	Red LED		
Continuity Test (Rx) / Diode Test			
Range	0...500 kΩ		
Tolerance	0% to +50%		
Test current	<5 μA		
Acoustic indication	yes		
Diode test	yes		
Indication	Yellow LED		
Overvoltage protection	690 V AC/DC		1000 VAC/1200 VDC
Automatic power ON	< 500 kΩ		
Phase Rotation Indication			
Voltage range	170...690 V AC phase to phase		170...1000 V AC phase to phase
Frequency range	40...70 Hz		40...70 Hz
Indication	Green LEDs		
Resistance Measurement (Ω) / Low Resistance Indication " •) " (2100-Gamma only)			
Resistance range on LCD	0...1999 Ω		
Resolution	1 Ω		
Tolerance	± (5% rdg + 10 LSD) at 20°C		
Temperature coefficient	± (5 LSD / 10 K)		
Test current	<30 μA		
Low resistance indication	Acoustic indication <10...50 Ω		
Overvoltage protection	690 V AC/DC		1000 VAC/1200 VDC
Non contact cable break detector / EF (electric field)			
Voltage range	–	–	100...1000 VAC
Frequency range	–	–	50...60 Hz
Indication	–	–	3 levels shown by LCD segments: — —= —== —===
Data Hold			
	–	only voltage measurement (12...690V AC/DC)	voltage and resistance measurement, Non contact cable break detector / EF
Measurement Area Illumination / Torch Light			
Torch light	White LED		
Backlight	White LED		
General Specifications			
Operation time (DT)	30 s		
Recovery time	240 s		
Operating temperature	-15°C to +55°C		
Storage temperature	-15°C to +55°C		
Humidity	Max. 95% RH		
Operating altitude	Up to 2000 m		
Safety rating (measurement category)	CAT IV / 600V, CAT III / 690V		CAT IV / 600V, CAT III / 1000V
Pollution degree	2		
Protection degree	IP 64		
Safety regulations	IEC 61243-3:2014, EN 61243-3:2014, DIN VDE 0682-401:2015		
Approvals, compliance	GS mark from TÜV Rheinland, CE		
Power Supply	Battery 2 x 1.5V (AAA/IEC LR03)		
Power consumption	Approximately 90 mA		
Battery lifetime	More than 10000 measurements (<5 s / per measurement)		
Dimensions (HxWxD)	Approximately 280 x 78 x 35 mm (11.0 x 3.1 x 1.4 in)		
Weight	Approximately 320 g (0.71 lb)		